



Expert Paper - May 2006

## Designing a service-oriented world

ARIS for SAP NetWeaver: Business Process Excellence for  
SAP NetWeaver

# Designing a service-oriented world - ARIS for SAP NetWeaver: Business Process Excellence for SAP NetWeaver

*What can companies do now to prepare themselves for the next generation of service orientation? Examine their processes closely, thereby laying the groundwork for crucial services. IDS Scheer and SAP are working together on integrated business-process management based on SAP NetWeaver. It's time to take stock and examine the outlook toward ESA.*

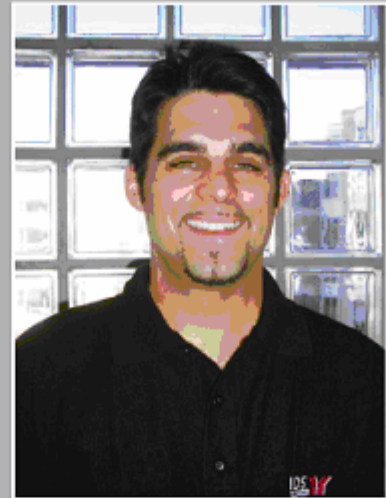
## Find out how:

- you can build a bridge between operational departments and your IT systems in an SAP environment;
- you can already get from a business process view to operational implementation;
- why business process analysis is an important ongoing step on the road to SAP ESA.

Business process management (BPM) allows companies to monitor business scenarios and processes and continuously adapt to new strategies, thereby keeping pace with the latest economic conditions. With an integrated perspective on strategy, from modeling and implementation to monitoring, BPM bridges the gap between business-management requirements and their execution using information technology.

The open integration and application platform SAP NetWeaver allows users to consolidate information and business processes across technologies and companies. At the same time, SAP NetWeaver supports process automation within SAP applications (workflow management). Cross-system processes can be integrated and automated with SAP NetWeaver Exchange Infrastructure (XI). The engine used in both cases is a BPM runtime, which works as a virtual machine to handle interpretation and execution of process logic. This can be an application workflow in an SAP component or a service-orchestration model in BPEL (business process execution language, a standard for Web-service orchestration authored by IBM, SAP, Microsoft, and BEA).

## About the authors:



### Eric Brabänder

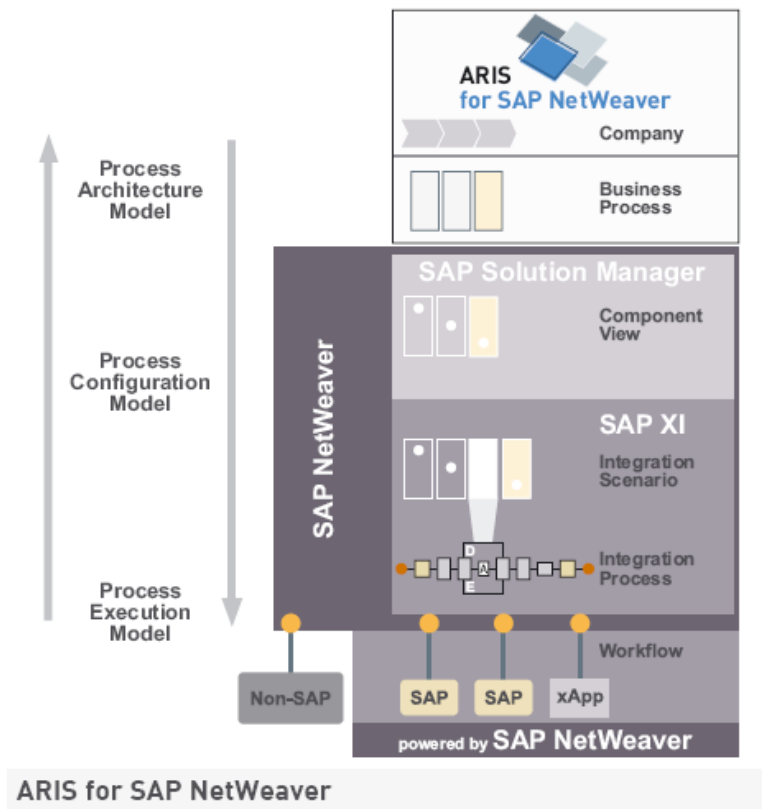
is a product marketing manager at IDS Scheer AG with responsibility for ARIS Platform, ARIS for SAP NetWeaver, and for the development of the ARIS solution integrated into SAP NetWeaver.



### Sven Schmidt

is a member of the Public Relations team at IDS Scheer and responsible for communication relating to topics such as "the integration of ARIS and SAP NetWeaver"

Thus far the SAP NetWeaver application platform has been lacking attached business-process-management components. They make it possible to take note of, analyze, and optimize the user's business-management process in preparation for its subsequent conversion. This connection between business management and technological execution is the focus of the collaboration between SAP and IDS Scheer. On the product end, this means integration of the ARIS modeling tool and the SAP NetWeaver application platform. To guarantee this transition from business-management process design to technological implementation, IDS Scheer is currently providing a jointly designed product that such customers as the German armed forces have been using for about two years now: ARIS for SAP NetWeaver



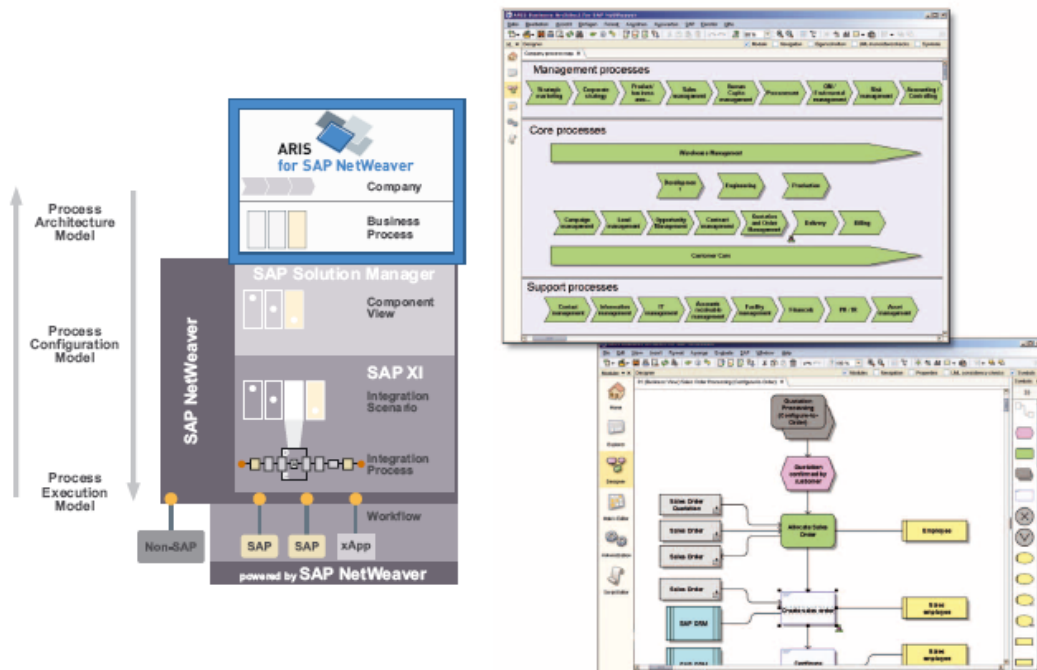
## 1. Closing the gap between Business and IT

ARIS for SAP NetWeaver closes the gap between requirements from a business-management-process standpoint and the implementation of these process requirements through SAP applications. Furthermore, business-process management with ARIS for SAP NetWeaver is the starting point for successful conversion to future technologies, such as SAP's Enterprise Services Architecture.

The joint solution includes a general description of the process architecture, from the business model to configuration and implementation of processes via SAP Solution Manager, integration in SAP NetWeaver XI with service-orchestration models, and applications with SAP Business Workflow. ARIS for SAP NetWeaver can be used at three different levels.

At the highest level (process-architecture models), the company's process architecture is designed from a pure business-management standpoint without reference to technology. This model is the foundation for describing the company's process strategy and reformulating it if necessary.

Configuration models describe processes and process steps across the various components of mySAP Business Suite. Customizing activities are derived from these models, which also enable navigation to SAP systems and definition of monitoring information, such as transaction threshold values.



## Business process modeling

- Analysis and design of a corporate process architecture
- Use of SAP reference content for describing business processes (SAP Solution Maps, SAP Business Maps)
- Reducing the complexity of process design by using standard methods
- Use of SAP reference content for configuration (business scenarios, processes, process steps, transactions, services)

SAP Solution Manager provides customizable reference processes for the customer and can be used for operations, configuration and implementation, support, and process monitoring. Process models are synchronized between ARIS for SAP NetWeaver and SAP Solution Manager. In the process, users integrate SAP reference models and their content with the SAP systems' processes, process steps, and transactions in the process architecture and customize them to the company's specifications (Business Blueprint). Successful integration between ARIS for SAP NetWeaver and SAP Solution Manager allows design and modeling to be linked to process configuration.