

Oracle Integration 10^g Oracle Business Process Analysis Suite

Powered by ARIS

ORACLE BUSINESS PROCESS ANALYSIS SUITE

Oracle Business Process Architect

- Enables modeling business processes using multiple methods and notations

Oracle Business Process Simulator

- Enables simulating the modeled processes to develop what-if scenarios to arrive at an optimal process model

Oracle Business Process Server

- Enables collaborative development of process models with a shared repository

Oracle Business Process Publisher

- Enables publishing of the process models to portal for review and feedback by the business user

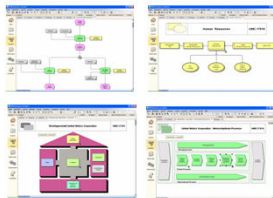
Quality and efficiency of business processes have a significant effect on both the short-term and long-term success of an organization. Organizations wanting to stay competitive must manage their business processes effectively. This requires systematic approach to the entire business process management (BPM) lifecycle. Business Process Analysis (BPA) that includes process modeling and simulation, is a key component of the BPM lifecycle. BPA together with process execution and monitoring tools enable complete lifecycle management of business processes.

Oracle Business Process Analysis Suite (BPA Suite) allows the business & IT community (process owners, business analysts and architects) to perform process modeling & analysis, simulation and publishing of process models. The BPA Suite further supports the execution and monitoring of these process models with Oracle BPEL Process Manager and BAM.

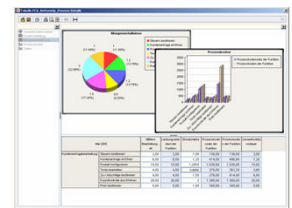
As part of the process analysis, organizational, structural and technological weak points in BPM processes are revealed and improvement potential is identified. The results of the analysis, combined with the corporate goals, are used to derive target processes, i.e. those processes that – implemented in IT – will in future help the company to create value.

Design, Run and Optimize Your Business Processes

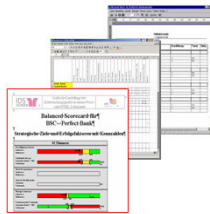
Process Design using Methods



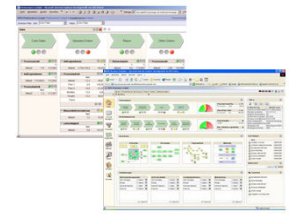
Analyses Using Simulation



Various Reports



Web Publishing



ORACLE
BUSINESS PROCESS ANALYSIS SUITE

ORACLE

ORACLE BUSINESS PROCESS ANALYSIS SUITE

"It is ideal for organizations looking to leverage business process management technologies to team with a single vendor that has already invested in integrating components that comprise business process management suites. We recommend that our clients carefully inspect the levels of integration when deciding on a BPMS."

-- Gartner Vice President and Distinguished Analyst Jim Sinur.

Product Overview

The **Oracle Business Process Analysis Suite** provides the means for detailed process analysis. It provides an integrated and comprehensive toolset, powered by the industry leading ARIS Platform to model, simulate and publish your business processes. Oracle BPA supports Enterprise Architecture, process improvement and change management initiatives and provides for alignment of BPM and SOA initiatives. In addition, the suite is innovatively integrated with Oracle SOA Suite, BPEL Process Manager and BAM to provide closed loop BPM capability. Oracle BPA Suite is comprised of four components:

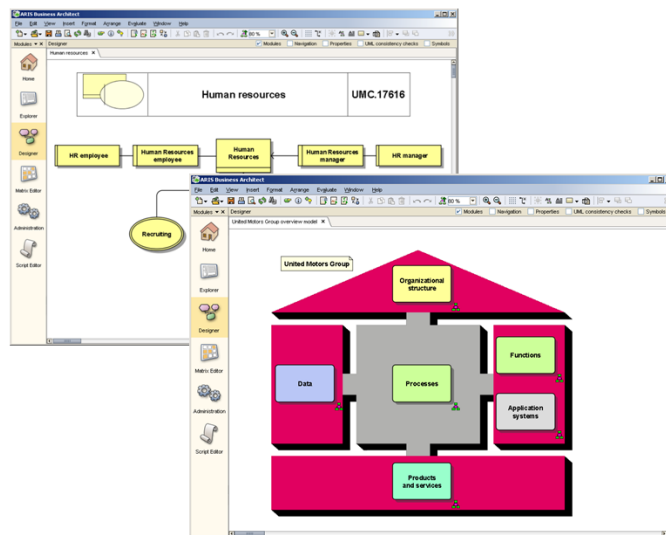
- Oracle Business Process Architect
- Oracle Business Process Simulator
- Oracle Business Process Server
- Oracle Business Process Publisher

Oracle Business Process Architect

Company organization is becoming increasingly complex and demands close integration of process management in the scope of an Enterprise Architecture.

Oracle Business Process Architect offers the greatest possible flexibility in modeling, analysis and optimization of IT infrastructures and business processes. IT and business processes are matched by portfolio and impact analyses. In implementation by means of IT systems, the processes serve as a technical specification for the necessary software applications.

In the scope of process design, Oracle Business Process Architect offers a comprehensive set of proven methods for projecting business processes. Available methods support other architecture frameworks in addition to the Oracle method, such as DoDAF, IT City Planning or Zachman. User-friendly, efficient functions, such as model generation from existing models, and functions that support mass data maintenance speed up workflow and provide consistent results. An efficient macro concept enables initiation of automatic work processes, such as automated consistency checks, after saving models or layout adaptations. These features reduce project time and costs.



ORACLE BUSINESS PROCESS ANALYSIS SUITE

Key Integration Considerations:

- Business and Technical Model Alignment is Key
- Integration of conceptual or abstract business process model and the physical execution model is the key challenge.
- Oracle is innovating in this area by introducing a shared metadata concept so that business people can just focus on the business process details and the technical developers could just concentrate on the process implementation and execution details.
- Shared metadata keeps both the models in sync at a level that makes most sense.

Key Differentiators:

Innovation

- Introducing Shared Meta Data Concept through a logical design layer to ease "round trip"

Standards Based

- Standards Support throughout (BPMN, BPEL, WS* etc.)

Closed Loop BPM

- Link real time process monitoring with process simulation

Collaborative Design

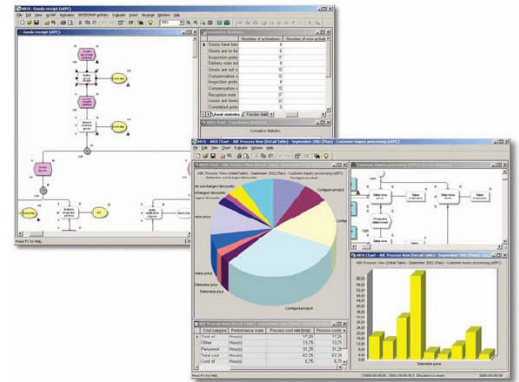
- Enable process-centric and SOA applications design

Oracle Business Process Simulator

Simulating business processes provides information about key performance indicators and can be used to evaluate various alternatives before making costly process modifications.

Oracle Business Process Simulator makes the results as realistic as possible by defining a warm-up phase so that the system can stabilize with regard to the distribution of resources before the actual analysis.

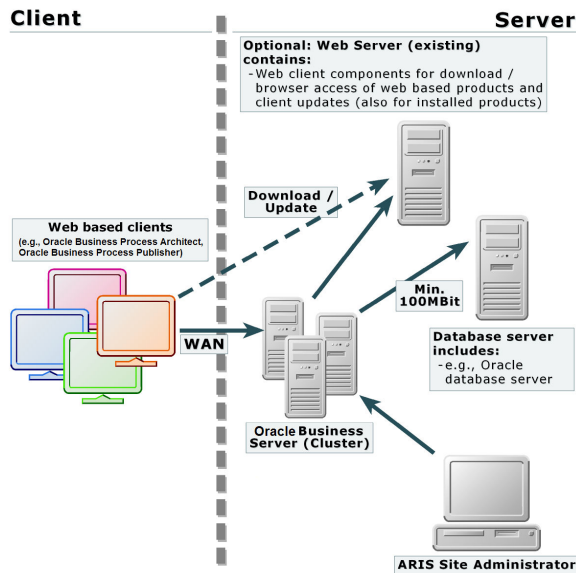
Within the process models there are analysis options, such as object and attribute animations, which apply optical changes to individual objects in the process model during the simulation for immediate feedback. Attribute animation provides detailed information about the state of individual objects such as the number of times a function has been carried out at a certain point in time.



Additionally, cumulative and detailed statistics provide precise information about a wide range of key performance indicators. These statistics can be displayed and also exported to MS Excel for further processing. "Probes" can be used to show the development of many key performance indicators over the course of the simulation period. With all these analysis options, companies are now in a position to judge the quality of their processes.

Oracle Business Process Server

The core element of a full-range system of process management is a central process database, which can be accessed by all business units. This shared system enables collaborative development of process models with a shared repository.



A company establishes a central Oracle process database that can be accessed from anywhere in the world. The company's different branches can then not only retrieve the process standards stored there, but can also modify them in detail to meet their specific needs. Process costs and IT costs will be lowered because standardized processes can be supported by uniform software.

ORACLE BUSINESS PROCESS ANALYSIS SUITE

RELATED PRODUCTS

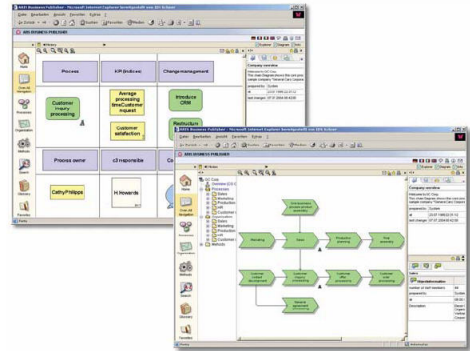
- Oracle SOA Suite
- Oracle BPEL PM
- Oracle Business Rules
- Oracle BAM
- Oracle ESB
- Oracle Adapters
- Oracle Service Registry
- Oracle Portal
- Oracle Identity Mgmt
- Oracle Bus. Intelligence

Oracle Business Process Publisher

Information only becomes knowledge in context. The mere existence of information is not enough; a user needs to know that important information is available and where to find it. Oracle Process Publisher supports your company in the installation and expansion of this capital. The challenge lies in filtering relevant information and sending it to users easily and securely (e.g., via process portals).

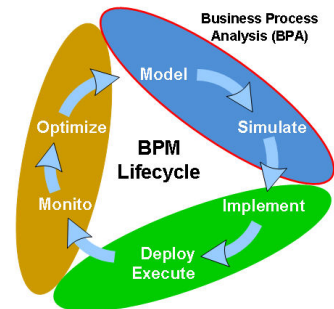
The News function in Oracle Process Publisher constantly informs employees of new content.

Oracle Business Process Publisher Client is integrated with Oracle Business Process Architect and manages the distribution of process contents. The contents of Oracle Business Process Publisher are displayed by a presentation layer where any information can be displayed and arranged in the browser. New information sources can be integrated with JavaScript, XML or HTML. Oracle Business Process Publisher also has an efficient search and feedback function, which can be easily adapted to your requirements.



Oracle BPA Suite expands the value proposition of Oracle BPM offering:

- One Stop Shop for a Complete BPM Solution
- Best of Breed Business Process Modeling, Execution and Monitoring - i.e. Mature, production-proven, integrated products at all levels
- Standard Driven Innovation - i.e. shared metadata approach for business and IT collaboration, and BPM and SOA alignment



For More Information

To learn more about Oracle Business Process Analysis Suite visit:

<http://otn.oracle.com/products/integration/index.html>

Oracle Corporation
World Headquarters
500 Oracle Parkway
Redwood Shores, CA 94065 U.S.A.

Worldwide Inquiries:
Phone: +1.650.506.7000
Fax: +1.650.506.7200
oracle.com

Copyright 2006, Oracle. All Rights Reserved.
This document is provided for information purposes only, and the contents hereof are subject to change without notice. This document is not warranted to be error-free, nor is it subject to any other warranties or conditions, whether expressed orally or implied in law, including implied warranties and conditions of merchantability or fitness for a particular purpose. We specifically disclaim any liability with respect to this document, and no contractual obligations are formed either directly or indirectly by this document. This document may not be reproduced or transmitted in any form or by any means, electronic or mechanical, for any purpose, without our prior written permission.
Oracle, JD Edwards, PeopleSoft, and Siebel are registered trademarks of Oracle Corporation and/or its affiliates. Other names may be trademarks of their respective owners.